



Way of Life!

£500 FREE ACCESSORIES†

MINIMUM LICENCE CATEGORY **A**

V-Strom 1000

AVAILABLE AT 3% APR REPRESENTATIVE OVER 37 MONTHS WITH A £1000 MINIMUM DEPOSIT.

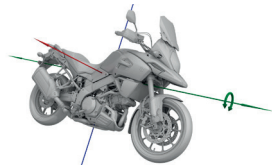
OTR: £10,445



Key Features



Characterful V-Twin Engine



2 Mode Traction Control



Adjustable Screen



Motion Track Brakes

Specifications	
Power	74.0kW @ 8,000rpm (101PS)
Torque	101.0Nm @ 4,000rpm (74.49lb. ft) ¹
Traction Control	2 selectable modes and off
Engine Displacement	1037cc
Engine Configuration	4-stroke, 2-cylinder, liquid-cooled, DOHC, 90° V-Twin
Gears	6
Seat Height	850mm (33.5in)
Fuel Capacity	20.0L (4.4imp gal)
Kerb Mass	232kg (511lbs)
Insurance Group Guideline	13
MPG / CO ₂	57.65MPG ² / 115g/km

¹Torque conversions to imperial units (in brackets) are approximate and included as a guide only.
²Fuel economy was measured by Suzuki in the Worldwide Motorcycle Test Cycle (WMTC)
MPG figures are for comparative purposes only and may not reflect real riding results.

Your Suzuki Extras³



Genuine Accessories



Accessory Bar
990D0-31J00-030



Centre Stand
42100-31820-000



GIVI Top Case
990D0-E5500-000



Wider Footrest Set
990D0-28K10-000

£119 per Month (Plus Deposit and Optional Final Repayment)

PCP Representative Example

36 Repayments of	£119.00
Optional Final Repayment	£4,716.00
Cash Price	£10,445.00
Deposit	£2,045.38
Total Amount of Credit	£8,399.62
Total Amount Payable	£11,045.38
Agreement Duration	37 Months
Purchase Fee*	£10.00
Interest Rate (Fixed)	2.91%
Representative APR	3% APR

We can tailor a quote to your personal needs, please ask

*Included in Optional Final Repayment.
Credit is subject to status and is only available to UK residents aged 18 and over.
Suzuki Personal Contract Purchase (PCP) is only available through Suzuki Finance, a trading style of Suzuki Financial Services Limited. Registered office: St. William House, Tresillian Terrace, Cardiff, CF10 5BH.
This Representative Example is based on an annual mileage of 6,000.
Finance figures are correct at time of print - June 2019, but may be subject to change.
With Personal Contract Purchase (PCP) you have the option after you have paid all of the regular monthly repayments to:
(1) Return the vehicle and not pay the Optional Final Repayment. In this example if the vehicle has exceeded 18,500 miles, a charge of 7.2p (including VAT at 20%) will apply per excess mile. If the vehicle is in good condition (fair wear and tear accepted) and has not exceeded 18,500 miles you will have nothing further to pay.
(2) Pay the Optional Final Repayment to own the vehicle or
(3) Part exchange the vehicle subject to settlement of your existing finance agreement; new finance agreements are subject to status.

³ For T&Cs visit bikes.suzuki.co.uk/your-suzuki-extras

[†] Offer available on selected models, visit bikes.suzuki.co.uk for more information.